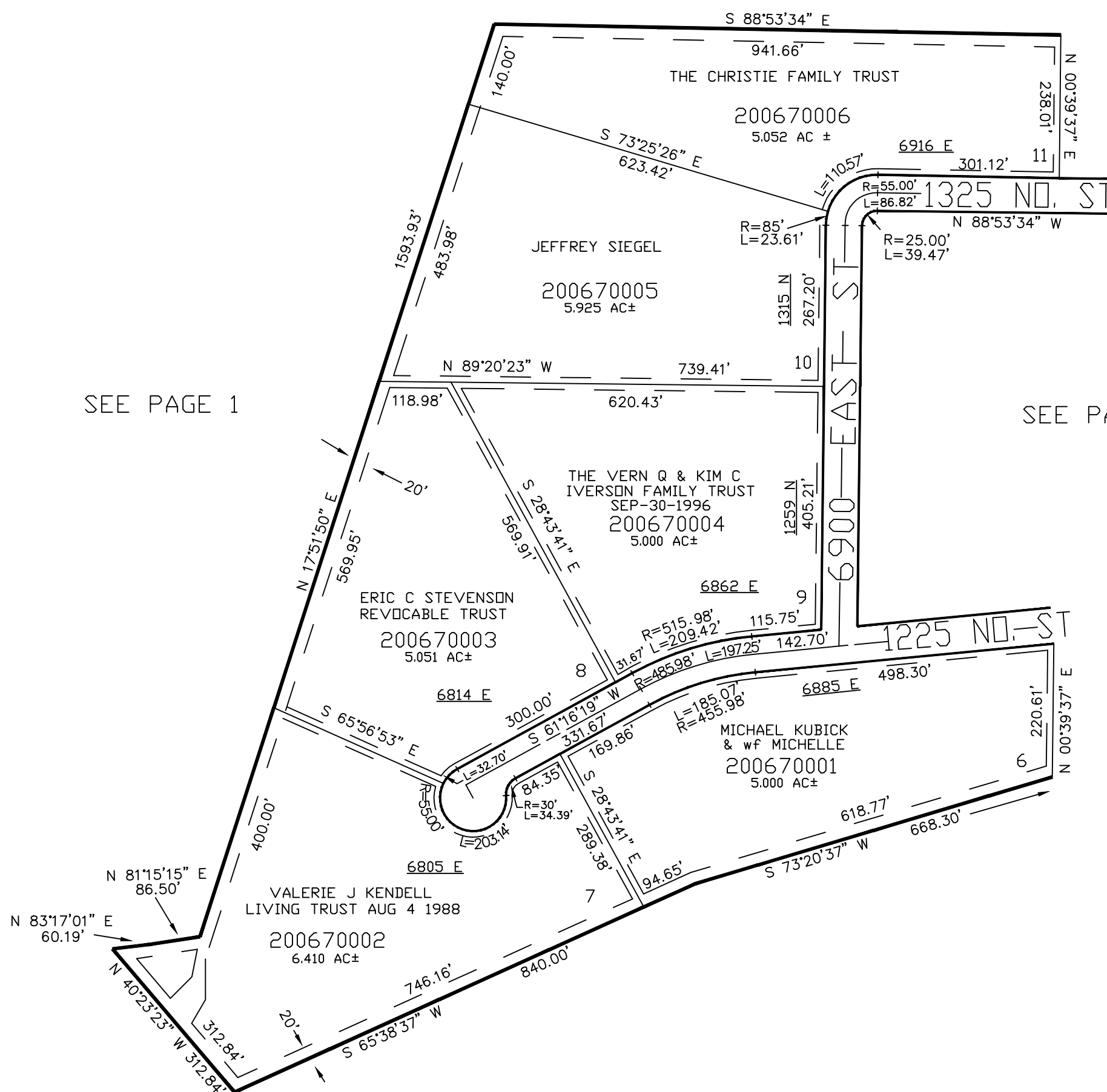


PART OF THE SE 1/4 OF SEC. 1, T.6N., R.1E., S.L.B. & M.
HERITAGE KNOLL ESTATES

IN WEBER COUNTY
SCALE 1" = 200'

TAXING UNIT: 317

SEE PAGE 1



SEE PAGE 1

SEE PAGE 66

SEE PAGE 1

10' UTILITY & DRAINAGE EASEMENTS EACH SIDE OF PROPERTY LINES AS INDICATED BY DASHED LINES EXCEPT AS OTHERWISE SHOWN.

FOR COMPLETE ENG DATA SEE ORIGINAL DEDICATION PLAT IN BOOK 47, PAGE 95 OF RECORDS.