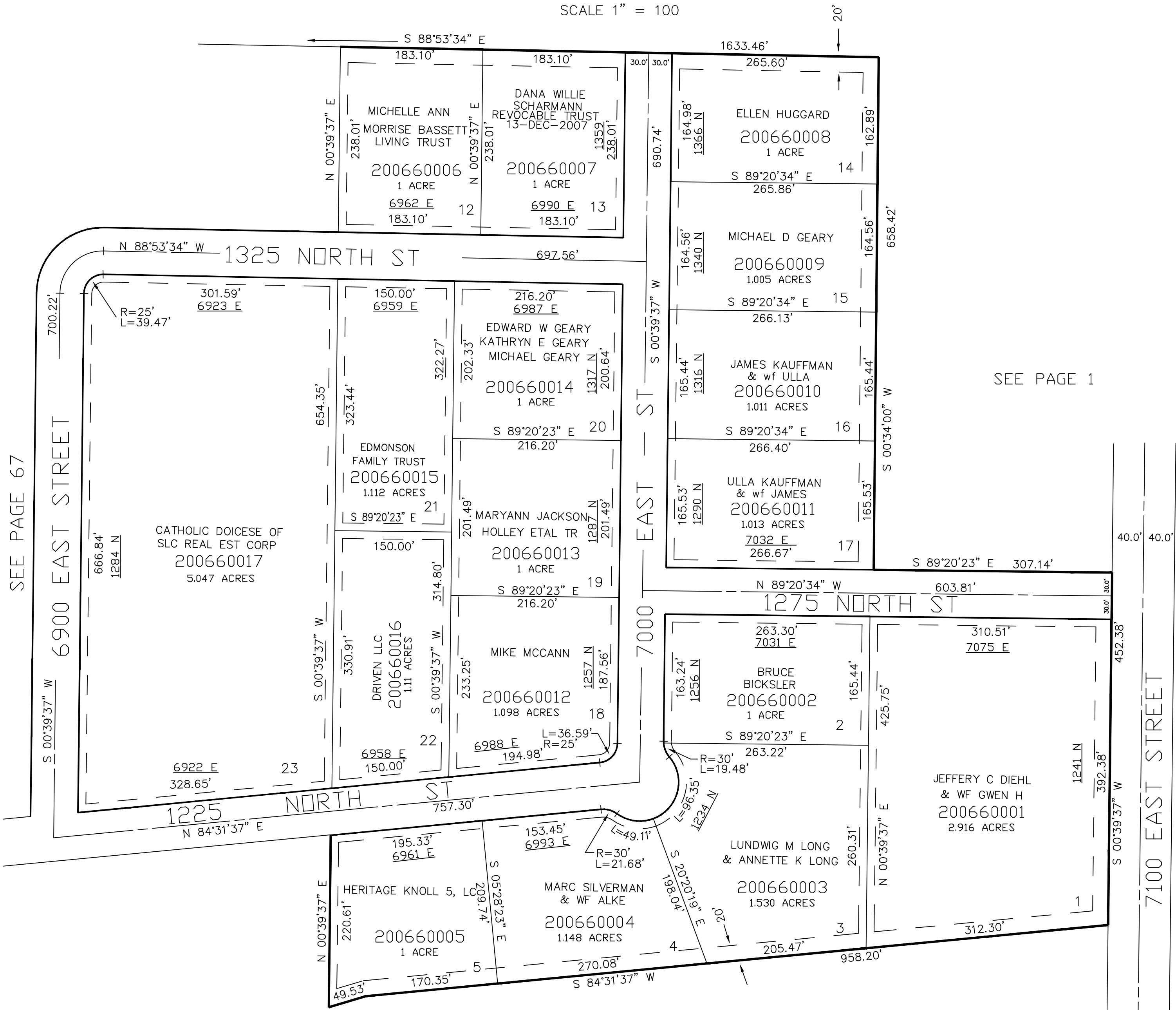


PART OF THE SE 1/4., OF SEC. 1, T.6N., R.1E., S.L.B. & M.
HERITAGE KNOLL ESTATES

TAXING UNIT: 317

IN WEBER COUNTY
SCALE 1" = 100

SEE PAGE 1



SEE PAGE 1

SEE PAGE 1

10' UTILITY & DRAINAGE EASEMENTS EACH
SIDE OF PROPERTY LINES AS INDICATED
BY DASHED LINES EXCEPT AS OTHERWISE
SHOWN.

FOR COMPLETE ENG DATA SEE
ORIGINAL DEDICATION PLAT IN
BOOK 47, PAGE 95 OF RECORDS.