

PART OF SECTION 19, T.6N., R.2E., S.L.B. & M.  
TRAPPERS CROSSING CLUSTER SUBDIVISION

IN WEBER COUNTY

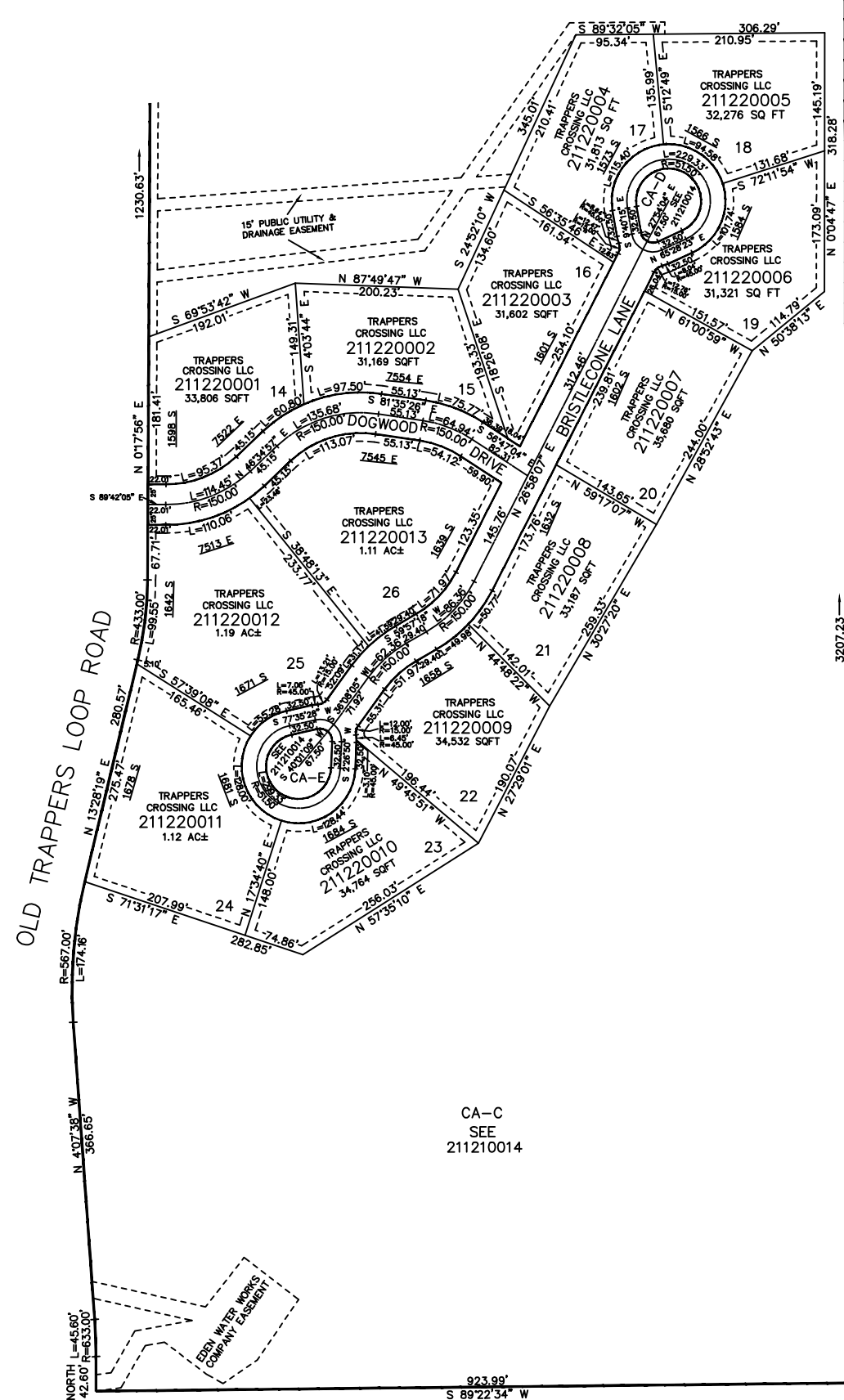
SCALE 1" = 200'

TAXING UNIT: 318

SEE PAGE 121

SEE PAGE 31

SEE PAGE 31



10' UTILITY & DRAINAGE EASEMENTS EACH SIDE OF PROPERTY LINES AS INDICATED BY DASHED LINES EXCEPT AS OTHERWISE SHOWN.

FOR COMPLETE ENG DATA SEE ORIGINAL DEDICATION PLAT IN BOOK 72, PAGE 37 TO 40 OF RECORDS.