

PART OF THE S.E. 1/4 OF SEC. 8 & THE S.W. 1/4 OF SEC. 9 &
THE N.W. 1/4 OF SEC. 16 & THE N.E. 1/4 OF SEC. 17, T.6N., R.2E., S.L.B. & M.

HUNTSVILLE MEADOWS SUBDIVISION

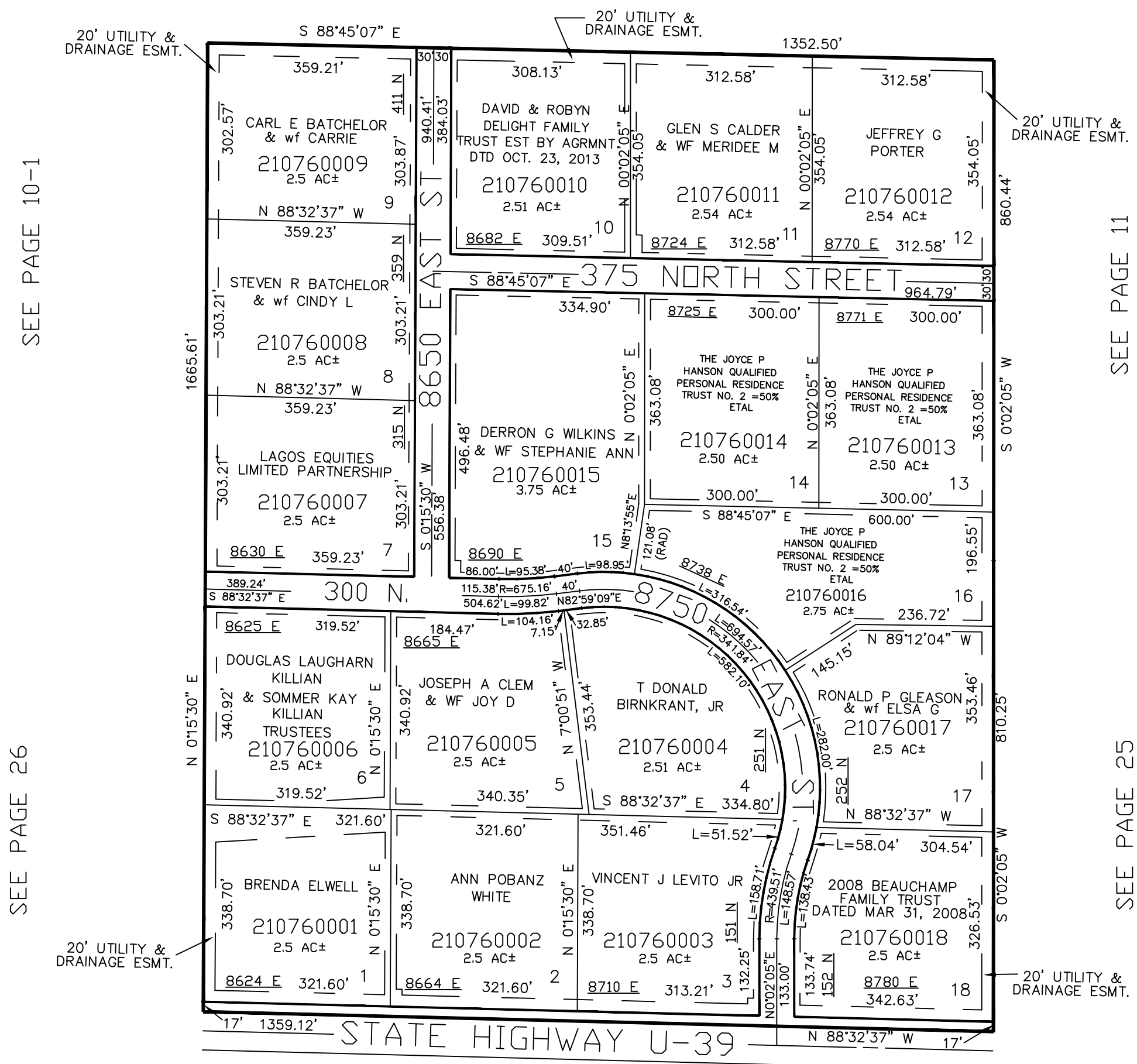
TAXING UNIT: 318

IN WEBER COUNTY

SCALE 1" = 200'

SEE PAGE 10-1

SEE PAGE 11



SEE PAGE 26

SEE PAGE 25

10' UTILITY & DRAINAGE EASEMENTS EACH SIDE OF PROPERTY LINES AS INDICATED BY DASHED LINES EXCEPT AS OTHERWISE SHOWN.

FOR COMPLETE ENG DATA SEE ORIGINAL DEDICATION PLAT IN BOOK 47, PAGE 59 OF RECORDS.